



June 2018

WYOMING COUNTY SOIL & WATER CONSERVATION DISTRICT



New Leadership at Wyoming County Soil and Water

Allen (Al) Fagan began working for the Wyoming County Soil and Water Conservation District in June of 2012 as a Conservation District Technician. Since that time, Al has been active in the wide range of programs that the WCSWCD coordinates and participates in, including the Agricultural Environmental Management, Agricultural Grants and Project Implementation, Streambank Stabilization, Hydroseeding, Trees for Tribes, Water Quality, Educational, and other various programs.

Al grew up in Wyoming County, in the Town of Pike. Al is an avid outdoorsman, enjoying hunting, hiking, and camping while not at work. Because of Al's interests, environmental conservation has a strong significance in all facets of his life. Al, a Letchworth Central Alum, graduated from Paul Smith's College in 2011 with a Bachelor's of Science and an Associates of Applied Science Degrees in Forestry. His resume before WCSWCD includes many different positions for various agencies dedicated towards conservation. His ties to the area foster an initiative to improve the environment in Wyoming County and beyond.

In January of 2018, Al was hired as the District Manager of the Wyoming County SWCD. Al's five and a half years as a technician allowed him to gain a well-rounded knowledge of the various aspects of nutrient & sediment reduction, farm planning, water quality improvements, educational outreach, and the administration of these programs.

Al looks forward to helping the District continue to grow its programs and provide assistance to the residents of Wyoming County with the great staff the District has.



Wyoming County Envirothon winning team – Attica Central School

The Trailside Envirothon is a regional competition for high school students in the local area, including Wyoming and Allegany County. Teams of students are tested on their knowledge of five different subjects throughout the day which include forestry, wildlife, soils, aquatics, and a current issue. This year's current issue topic was Western Rangeland Management.

This hands-on educational event includes a wide variety of questions on examinations; anywhere from identifying an animal from its fur to measuring the board footage in a tree to using reference materials to determine a soil type. Students spend a significant amount of time studying for the event, both in their normal classes, and also attending study sessions after school hours. The winning team from each county is able to advance on to the New York State Envirothon, which was held at Hobart William Smith College in Geneva, NY on May 23rd and 24th.

The winners of the 2018 Trailside Envirothon were Attica Central School for Wyoming County and Cuba-Rushford School District for Allegany County.



Wyoming County - Attica Central School
Colin Reisdorf, Michael Stenson, Bianca Foeller,
Brianna Acker and Patrick Donohue

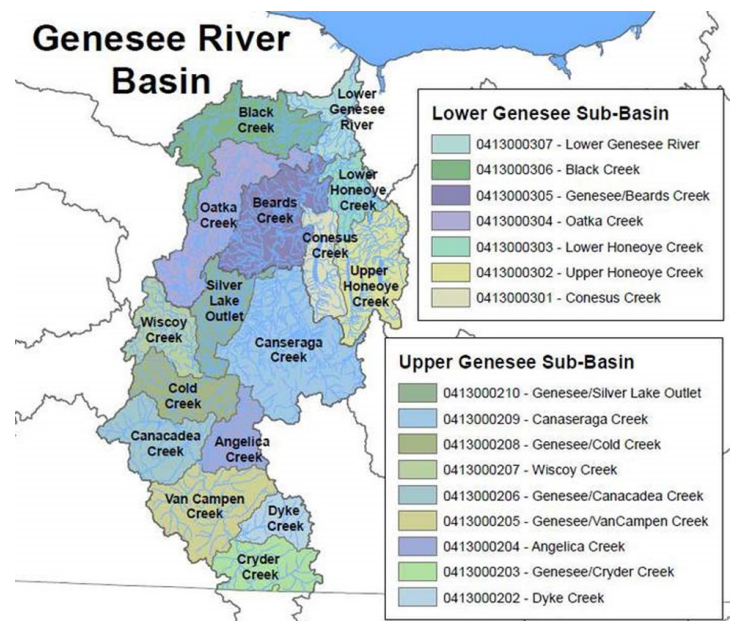
Genesee River Sediment and Phosphorus Reduction Program

The Genesee River flows north for 144 miles before emptying into Lake Ontario at Rochester. The watershed includes more than 5000 miles of freshwater rivers and streams. Water quality concerns include urban and industrial runoff, agricultural runoff, and municipal storm overflow.

Soil and Water Conservation Districts in the watershed include Livingston, Allegany, Monroe, Genesee, Wyoming, Ontario, Orleans, Steuben, and Cattaraugus Counties in New York State, as well as 15 miles of the source of the river in Potter County, PA.

The Districts have been very active in mitigating water quality concerns in a variety of areas, including through the State Committee's Agricultural Non-Point Source and Soil Health Mini-Grants programs, erosion and sediment control work, and Trees for Tribes efforts. Joining together to create a coalition will allow them to coordinate their efforts, leverage their authority for increased funding rather than competing with each other for the same funds, and ultimately improve the water quality of the river and watershed.

Recently, the coalition has been awarded EPA funding for the Genesee River Watershed Phosphorus and Sediment Control Project to implement a variety of Agricultural Non-Point Source erosion control practices. The Genesee River Basin Nine Key Element Watershed Plan for Phosphorus and Sediment lists many erosion control practices as acceptable measures to reduce Phosphorus and Sediment that will help to attain load reductions. Within Wyoming County, the practices to be targeted include Grassed Waterways, Water & Sediment Control



Basins (WASCOB's), Underground Outlets, and Cover Crops. The area being targeted in Wyoming County is the Genesee River Basin, including the Wiscoy Creek, East Koy Creek, Cold Creek, Genesee River Direct, Silver Lake, Oatka Creek, Little Beards Creek, and Black Creek watersheds. Cost sharing for these practices within these watersheds will be available. Please contact the Wyoming County SWCD at (585) 786 - 3675, or visit our office at 36 Center Street, Suite D, Warsaw, NY 14569 for further information on this project.

NYS Grown and Certified Partners with Agricultural Environmental Management - It's Good Business

The New York State Grown and Certified program launched in 2016 to help meet the growing consumer demand for high quality foods grown or produced to a higher standard within New York State. To be a part of the New York State Grown and Certified program, participating farmers and processors, must meet food safety standards that pertain to specific commodities, such as GAP (Good Agricultural Practices), while also meeting the required environmental standard by participating in an AEM (Agricultural Environmental Management) assessment. Commodities that are currently accepted into the NYS Grown and Certified Program include produce, dairy, eggs, beef, poultry, pork, oysters, Christmas trees and maple products.

Soil and Water Conservation Districts (SWCDs) lead in the implementation of the AEM program. AEM is a voluntary, confidential, locally-led, and comprehensive approach that further advances environmental manage-

ment on New York's farms, across all sizes and commodities. This program delivers technical support and financial incentives needed to help farmers to implement conservation practices critical to the protection of water quality and other natural resources.

AEM helps to ensure that New York's farms remain viable and continue to meet their business objectives in an everchanging market place. Over the last two decades, over 12,000 farms across New York State have participated in AEM by working with local SWCDs and partnering with resource professionals, to develop and implement comprehensive, farm-specific plans using AEM's 5-Tier approach.

Tier 1: Inventory current activities, and future plans of the farm business.

Tier 2: Assess current environmental stewardship and opportunities for improvement.

Tier 3: Develop conservation plans addressing concerns and opportunities tailored to farm goals.

Tier 4: Implement plans utilizing available financial, educational, and technical assistance.

Tier 5: Evaluate practices and plans to ensure the protection of farm viability and the environment.


The New York State Grown & Certified program requires an AEM Tier 2 assessment. Completing this step provides farms the opportunity to become more engaged with the AEM program, often leading to further work through the Tiers to address farm and natural resource needs. Advancing through the AEM Tiers, opens doors for farms to apply for cost-share funding to implement priority practices, by advancing to the Tier 3 planning process.

AEM takes a whole farm view to address not only nutrient management, but also addresses farmstead water supplies; pasture management; pesticide mixing, loading and storage; erosion control; stream and floodplain management; irrigation water management; and soil health to name a few. AEM can also address farm-to-neighbor relations and agriculture in the community.

In today's climate of environmental awareness, AEM's technical and financial resources are valuable to assist farmers in maintaining their commitment to conservation.

Proactively advancing conservation practices is central to economic viability on today's farms. All farms that are enrolled in the NYS Grown and Certified Program are encouraged to partner with their local SWCD to work further through the AEM Tiers, if they've not already done so. Any farm can participate in AEM, without necessarily participating in the New York State Grown and Certified program.

Soil and Water Conservation Districts continue their long record of leading and implementing AEM with farmers at the county level, supported by statewide leadership from the Department of Agriculture and Markets and the NYS Soil and Water Conservation Committee. To learn more about AEM, contact your local SWCD, or visit www.nys-soilandwater.org. For more information about the NYS Grown and Certified program, visit <https://certified.ny.gov>.

JAVA EXCAVATING
PAUL W. FREYBURGER
Java Village, NY
585-457-9483
* Lagoons * Land tiling
* Sitework * CAFO projects
javaexcav@yahoo.com

Tri - County STUMP REMOVAL
FULLY INSURED FREE ESTIMATES
Call Anytime
(585) 567-2638
7960 Trail Road
Freedom, NY 14065
TIM BARLOW

PAVILION DRAINAGE SUPPLY CO, INC.
Your Corrugated Metal & Plastic Pipe
Headquarters
Phillip Plossl, Pres.
Pavilion, NY 14525
585) 584-3261

D & H EXCAVATING, INC.
11939 Rt. 98 South
Arcade, New York 14009
ELDON KING
"Gift of Experience"
(716) 492-4956 Fax: 492-4951



- Basements
- Driveways
- Septics
- Ponds
- Trucking
- Gravel & Topsoil

J. MEYERS CONTRACTING, LLC
RESIDENTIAL, AGRICULTURAL AND COMMERCIAL SITE DEVELOPMENT
EXCAVATION, BULDOZING, TRUCKING, AND MUCH MORE...
716-984-4524
FIND US ON FACEBOOK!



J. MERLE EXCAVATING
• Ponds
• Driveways
• Land Clearing
• Agricultural Earth Work
Jason Merle
2931 Rt.20
Attica, NY 14011
585-813-8673- Cell
585-547-373- Evenings

R.W. TAYLOR
Trucking & Excavating, LLC
Residential Agricultural Commercial
Site Work Foundations Tiling Stone
Water & Sewer Lines Excavating Ditches Sand
Ponds Driveways Hauling Gravel
Demolition Topsoil
Wayne Taylor
Owner
482 Pavilion - Warsaw Road, Wyoming
p: 585.584.3491 f: 585.584.8453 c: 585.259.5213

SJF CONSTRUCTION, INC.
General Contractor
Formed Concrete • Steel Buildings • Site Work
Stephen Ferry Jr. Vice President
2025 Attica Road Telephone: (585) 547-9490
Darien Center, NY 14040 Facsimile: (585) 547-9401

W.M. Kent INC.
David Kent
david@williamkentinc.com
Ph: 585-343-5449
Fax: 585-343-5577
Cell: 585-739-5609
www.williamkentinc.com
Auctioneers - Appraisers - Real Estate Brokers
PO Box 58 - Stafford, NY 14143

ALLEGHANY FARM SERVICES LLC
Alleghanyfs.com
Drew & Chad Klotzbach
7342 Alleghany Rd
Basom New York 14013
Drew: 716-560-1979
Chad: 716-560-0470
Office: 585-762-4411
drew@alleghanyfs.com
chad@alleghanyfs.com



Drainage Contractors
Plow - Trencher
GPS Controlled
GPS Mapping - Tile & Topo
Excavation- Hedgerow Removal
Manure Storage Installers
GPS Site Preparation

Land Improvement Contractors of America
LICA
L. B. Tiling, Inc.
Laser Controlled
Drainage Systems
Bulldozing
Ponds-Septic Systems-Locations
Lee Broadwell (585) 493-2018



JOHN F. GILLEN
Land Surveyor
GILLEN & WELLMAN
Land Surveyors
7 Perry Avenue
Warsaw, New York 14569
Telephone: (585) 786-3960
Fax: (585) 786-2933
Email: johngillen@frontiernet.net

Jake Kelly was hired as a full time Conservation Technician on May 21st. Jake graduated from SUNY College of Environmental Science and Forestry in May of 2018 with a Bachelor's degree in Natural Resources Management. He also obtained an Associate's degree in Environmental Studies in 2016 from Finger Lakes Community College.

Jake is originally from Wyoming County, and grew up in Perry. He is interested in improving water quality and decreasing erosion. Jake looks forward to working closely with residents and the agricultural professionals in Wyoming County.



Wyoming County Soil & Water Conservation District

Phone & Fax:
585-786-3675

wcswcd@frontiernet.net
www.wcswcd.org



This publication is the quarterly newsletter of the Wyoming County Soil and Water Conservation District and is available at no cost to all District cooperators, all interested landowner and land users, and to the general public. To receive this newsletter, simply email us at weswcd@frontiernet.net or send your complete mailing address to our office.

*Chairman, At-Large Member
County Supervisor
County Supervisor
Farm Bureau Representative
Grange Representative*

*Daryl Heiby
James Brick
Angela Brunner
Walt Faryna
Joseph Gozelski*

DISTRICT STAFF

*District Manager
Secretary/Treasurer
Conservation Technician
Conservation Technician
Part-time Technician*

*Allen Fagan
Sharon Boyd
Stephen Dziak
Jacob Kelly
Gregory McKurth*



Wyoming County SWCD
36 Center St. Suite D
Warsaw, NY 14569

NON-PROFIT
ORGANIZATION
U.S. POSTAGE PAID
WARSAW, NY 14569
PERMIT NO. 64