

WYOMING COUNTY SOIL & WATER CONSERVATION DISTRICT 2018 ANNUAL REPORT



The Mission of the Wyoming County Soil and Water Conservation District is to promote wise management of our natural resources through a wide variety of quality conservation and educational programs.

Wyoming County SWCD provides technical assistance on soil, water, and related natural resources to municipalities, farmers, and landowners who utilize the information to make sustainable land use decisions and protect water resources. The Wyoming County SWCD works with many stakeholders to secure cost share funding which is used to complete Best Management Practices on farms, water quality improvement projects, and stream channel restoration.



Performance Measure Funding 10 YEAR HISTORY - \$285,315.00

These funds are made available to Soil & Water Conservation Districts across the state by the New York State Soil & Water Conservation Committee as reimbursements to further District programs.

Districts must qualify for this funding by meeting stringent criteria set by the state during the course of each calendar year. In the past, Wyoming County SWCD has utilized these funds to conduct watershed studies, to assess stream channel erosion sites, to enhance watershed management through GIS, and to assist municipalities with streambank stabilization and protection projects throughout Wyoming County.



Cross Town Alliance Church
Streambank Protection, Arcade



Private Dr 1, Plunge Pool and
Diversion Ditch, Silver Lake

Conservation Project Assistance 10 YEAR HISTORY - \$60,000.00

These funds are made available to Soil & Water Conservation Districts across the state by the New York State Soil & Water Conservation Committee as well. A maximum of \$6,000 to each District on an annual basis for the implementation of specific projects of importance. These funds have been utilized in Wyoming County for projects such as road ditch stabilization for municipalities, drainage improvements at the Wyoming County Fairgrounds, culvert and channel stabilization projects in the Silver Lake Watershed and streambank protection and trout habitat restoration on the Oatka and Wiscoy Creeks.



Trees for Tribs Funding - \$110,000.00

Trees for Tribs is a New York State Program that promotes native tree planting along streams. Trees provide many benefits to streams, helping to stabilize streambanks, reducing sediment pollution, reducing stream temperatures, and supporting aquatic ecosystems.

Finger Lakes/Lake Ontario Watershed Protection Alliance (FL/LOWPA) 10 YEAR HISTORY - \$682,680.00

FL/LOWPA funding is an annual appropriation from the NYS Department of Environmental Conservation to member counties of the Water Resources Board. Funds are used for water quality education and outreach, water quality monitoring projects and water quality improvements in the Lake Ontario Watershed. Through this program

funding, the Wyoming County SWCD has purchased and maintained our hydroseeding equipment and secured the necessary supplies and materials for a successful hydroseeding program. Other types of projects completed through this funding include several road ditch stabilization projects, implementation of agricultural Best Management Practices (BMP's), assistance to municipalities with water quality improvement projects, assistance to various watershed groups and organizations with watershed management planning and the implementation of water quality improvement and sediment reduction projects.



Club Road Drainage Improvement Project, Silver Lake



Streambank Protection at Rock
Glen Baptist Church



Streambank Stabilization at
Shearing Rd, Gainesville



Skeels Farm, LLC
Heavy Use Area Protection



Town of Middlebury Highway Dept.
Oil Separation Unit

GENESEE RIVER EROSION AND SEDIMENT CONTROL MINI GRANTS

-\$115,000.00

This is another funding source from the New York State Soil & Water Conservation Committee to Soil & Water Conservation District within the Genesee River Watershed, to promote soil health and to eliminate erosion and sedimentation in water courses of this high priority watershed in the Great Lakes Basin.

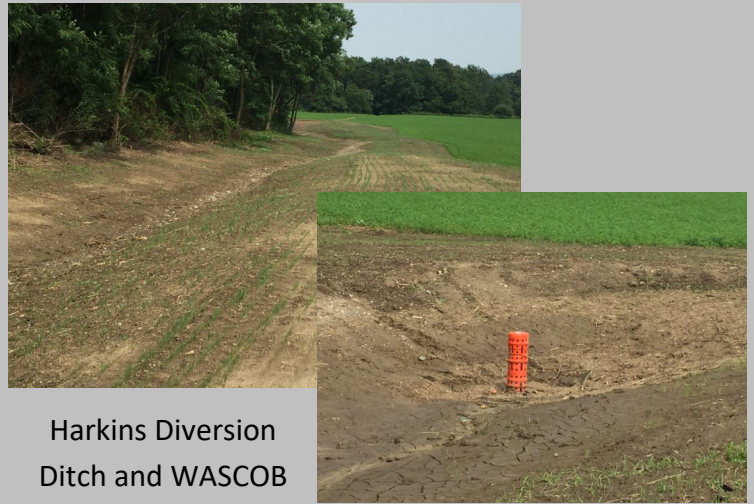
Through these funds, Wyoming County SWCD has partnered with many organizations to educate agriculture producers on the importance of soil health and to promote cover cropping. Another major component of this program is the implementation of Best Management Practices (BMP's) on agricultural lands to reduce erosion such as diversion ditches, grass and lined waterways, water and sediment control basins with, underground outlets, livestock stream crossings and livestock exclusion to protect water courses from contamination.



Armson Farms, LLC Cover Cropping



Kuipers Diversion Ditch during Construction



Harkins Diversion Ditch and WASCOB



Climate Resilient Funding
3 YEAR HISTORY - \$494,239.00
Table Rock Waste Storage
Cover and Flare



Stoney Creek Farm, LLC
Cattle Crossings/Livestock Exclusion Fencing

NYS Agricultural Nonpoint Source Pollution

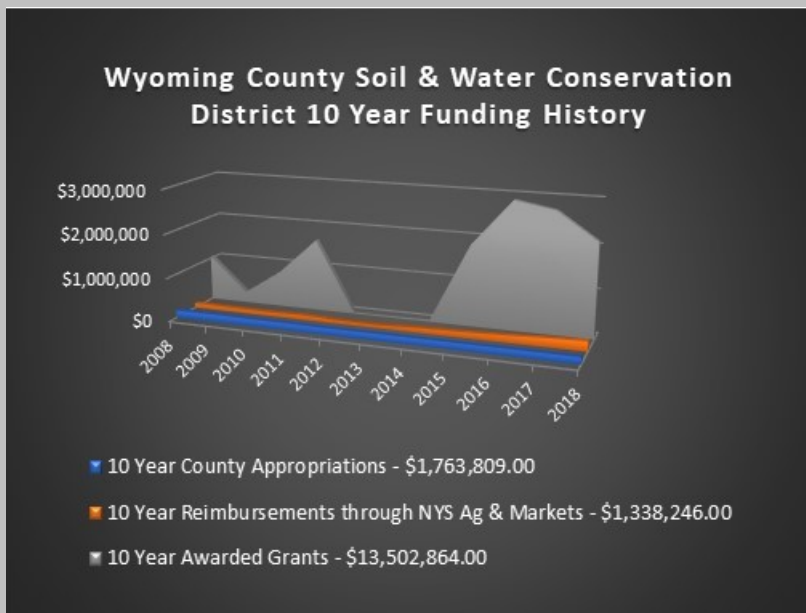
Abatement & Control Grant Program 10 YEAR HISTORY - \$8,976,582.00

This grant program was established in 1994 by the State of New York to assist farmers in preventing water pollution from agricultural activities by providing technical assistance and financial incentives. County Soil & Water Conservation Districts apply for the competitive grants on behalf of farmers and coordinate funded activities. Grants may cost-share up to 75% of the total project cost with farm owners or operators contributing the remaining percentage of the total project cost.

The New York State Soil & Water Conservation Committee and the Department of Agriculture & Markets coordinate the statewide program and allocate funds provided by the NYS Environmental Protection Fund on an annual basis to help farmers reduce and prevent agricultural sources of Nonpoint Source (NPS) Pollution. Through this important program, the Wyoming County SWCD has assisted many farms throughout the county in priority watersheds with the implementation of silage leachate management systems, vegetated treatment areas, a wide variety of manure and waste storage facilities, waste transfer systems including pipelines and pump systems, the establishment of riparian herbaceous and forested buffers along stream channels and ditches and other water quality improvement BMP's.



Construction of Waste Storage at Davis Valley Farm, LLC



Co-Vista Holsteins, LLC Manure Storage and Transfer System



CAFO Waste Storage and Transfer Funding 2 YEAR HISTORY - \$2,533,048.00



Construction of Covered Waste Storage at Deere Stone Farms, LLC

Great Lakes Funding 10 YEAR HISTORY - \$591,314.00

The Great Lakes Restoration Initiative (GLRI) is a federal program funded through the U.S. EPA and the USDA Natural Resources Conservation Service to strategically target the biggest threats to the Great Lakes ecosystem and to accelerate progress toward long term goals. Through the Great Lakes Commission in Ann Arbor, Michigan, this funding is made available to work with nonfederal partners to implement protection and restoration projects.

Through these program funds, Wyoming County has benefitted from several grants to complete much needed restoration and repair work on existing streambank stabilization projects on the Buffalo Creek In Erie and Wyoming Counties and erosion control projects in the Tonawanda Creek Watershed. Most recently, Wyoming County SWCD partnered with our counterparts in Genesee and Monroe Counties to complete the Black & Oatka Creeks Sediment Reduction Project that provided funding to agricultural producers to complete erosion and sediment control Best Management Practices in these important watersheds. Many of the projects included the implementation of cover cropping, diversion ditches, grass and lined waterways, water and sediment control basins, underground outlets, grade stabilization structures, establishment of riparian buffers, strip cropping systems, livestock exclusion and fencing projects.



Harkins Dairy, LLC Lined Waterway
with Underground Outlet



Rock-lined waterway under construction
at R. L. Jeffres & Sons Farm

2018 ACCOMPLISHMENTS

238 Requests for Assistance
40 Units of Government Assisted
31 Stream Site Reviews
6 Stream Permits
905 feet of Streambank Protection
365 feet of Stream Channel Stabilization
1 Stream Crossing Constructed
1 Pond Site Review
1 Culvert Assistance Request
7.17 acres of Riparian Buffers Established
50 GIS Mapping Projects
14 Wetland Assessments

2018 AGRICULTURAL PROJECTS COMPLETED

8 AEM Tier 1 Questionnaires
7 AEM Tier 2 Summaries
10 AEM Tier 3A Plans
11 AEM Tier 4 BMP's Installed
24 AEM Tier 5B Evaluations
157 Agricultural Value Assessments
6 Waste Storage Structures
7 Waste Transfer Systems
6.025 acres of Critical Area Seeding
1,180 feet of Diversion Ditch
963.15 acres of Cover Cropping

2018 Conservation Farm of the Year



Fontaine Farms, LLC of Strykersville

Fontaine Farms began in 1926, when Laverne Fontaine built the original barn on the farmstead that is still used to milk cows today. Fontaine Farms, LLC milks 270 animals, and cares for an additional 40 dry cows and 200 young stock. The farm operates approximately 700 acres to grow the crops they need to feed their animals.

Conservation practices come in many different forms. Over time, Fontaine Farms, LLC has implemented many best management practices to conserve natural resources on their farm. These BMP's include zone and minimum tilling, cover crops, silage leachate management systems, long term waste storages, riparian herbaceous buffers, live-stock exclusion from waterways, nutrient management, and wetland restoration. All of these practices help to prevent erosion and improve water quality, which are some of the main goals of the Wyoming County Soil and Water Conservation District.

AEM Base Funding 10 year history - \$349,927.50

Farmers have long been regarded as stewards of the land because a farm's livelihood directly depends on the health and vitality of the soil and water resources.

Agricultural Environmental Management (AEM) is designed to help farmers further protect those and other important natural resources. By participating in AEM, farmers can document their environmental stewardship and contribute to a positive image of agriculture in their communities.

The primary goal of AEM is to protect and enhance the environment while maintaining the viability of agriculture in New York State.

Additionally AEM strives to document environmental stewardship activities that farmers have already undertaken; Implement Best Management Practices (BMPs) on farms consistent with the resources of each individual farm; Help farmers understand and comply with existing and future environmental regulations; Increase the awareness of nonfarm community members of how agriculture benefits the environment and their communities, and how farmers are already working to protect natural resources; Increase farmers' awareness of how farm practices affect the environment on and off the farm; Use limited public program and financial resources efficiently by working on farms with the greatest potential for impacting the environment; and promote teamwork between farmers, agricultural service agencies and agribusiness.



**Agricultural Environmental Management (AEM) Award
Pankow Farms of Castile**



**Ronald P Herman Sr.
Conservation Partner Award**

Victor DiGiacomo, Associate Environmental Analyst, NYS Soil & Water Conservation Committee



If you would like to receive your conservation news by email rather than hard copy, please email Wyoming County Soil & Water Conservation District at: wcswcd@frontiernet.net

Chairman, At-Large Member	Daryl Heiby
County Supervisor	James Brick
County Supervisor	Angela Brunner
Farm Bureau Representative	Walt Faryna
Grange Representative	Joseph Gozelski

DISTRICT STAFF

District Manager	Allen Fagan
Secretary/Treasurer	Sharon Boyd
Conservation Technician	Jacob Kelly
Conservation Technician	Gregory McKurth

Phone & Fax: 585-786-3675
wcswcd@frontiernet.net
www.wcswcd.org

What is a Conservation District?

Conservation Districts are local governmental subdivisions established under state law to carry out a program for conservation, use and development of soil, water and related sources.

Districts are resource management agencies, coordinating and implementing resource and environmental programs at the local level in cooperation with federal and state agencies.

Wyoming County SWCD
36 Center St. Suite D
Warsaw, NY 14569

NON-PROFIT
ORGANIZATION
U.S. POSTAGE PAID
WARSAW, NY 14569
PERMIT NO. 64